



Electrolux
PROFESSIONAL

**Handling System for Rack Type
Manual Sorting Table, 4 Baskets - Right
to Left, 2130mm - Front Connection**

ITEM # _____
MODEL # _____
NAME # _____
SIS # _____
AIA # _____



865295 (HSMSF4RL)

Manual sorting table, 4
baskets, front connection,
Right>Left, 2130 mm

Short Form Specification

Item No. _____

Constructed in 304 AISI stainless steel. Basin with sloping bottom, drain with double strainer baskets. Long plastic rollers. Rack-guides inclined towards the sorting side. Square 40x40mm square legs with height-adjustable feet. Designed for 500x500mm dishwashing baskets. Attachment to Rack Type dishwasher or other tables on the left front side. Basket feed direction: from right to left.

Main Features

- Manual sorting table with front loading can be connected either to a rack type dishwasher or after the roller conveyor, a 90° dishwasher driven curve and a side loader on the loading side.
- Designed to transport 500x500 mm dishwashing baskets.
- "Key holes" and "snap on" system reduces the number of screws needed for fast and easy installation.
- Long rollers and strainer box easy to remove.
- Manual racks handling toward the dishwasher made easier thanks to the long rollers.

Construction

- All surfaces smooth with polished finish.
- Constructed in AISI 304 stainless steel with square 40x40mm legs.
- Thick welded flanges for sturdy connection between the units.
- Sloping bottom of the table grants a smooth and rapid drainage.
- Stainless steel strainer baskets easy to remove.
- Manual receiving and sorting operations.
- Connection from front.
- Optionally equipped with tray slides, a single adjustable over-shelf for empty baskets, a double adjustable over-shelf for sorting of baskets and empty baskets, spray guns, cutlery soaking basin and basin wash nozzles.
- Stainless steel feet 50 mm adjustable in height to align the operation height between the dishwasher and table.

Optional Accessories

- Pre-rinse unit (thermostatic mixer and shower) to be mounted on overself PNC 863136 ☐
- Emergency stop kit for Rack Type Dishwasher (not for Basic handling system) PNC 865162 ☐
- Basket support for vertical stacking of baskets (to be used with overself) PNC 865208 ☐
- Pre-rinse unit (mixer and shower) PNC 865209 ☐
- Double overself for 4-basket sorting table, 2120 mm PNC 865299 ☐
- Overself for 4-basket sorting table, 2120 mm PNC 865430 ☐
- Tray slide for 4-basket sorting table, 2130 mm PNC 865434 ☐
- Tray slide fixing brackets (3pcs) PNC 865437 ☐
- Grid underself for 4-basket sorting table PNC 865439 ☐
- Soaking basin with lifting device for cutlery rack PNC 865442 ☐
- Pre-wash spray unit, 1500 mm PNC 865443 ☐
- Tray slide for sorting table, 500 mm PNC 865444 ☐

APPROVAL: _____



Experience the Excellence
www.electroluxprofessional.com



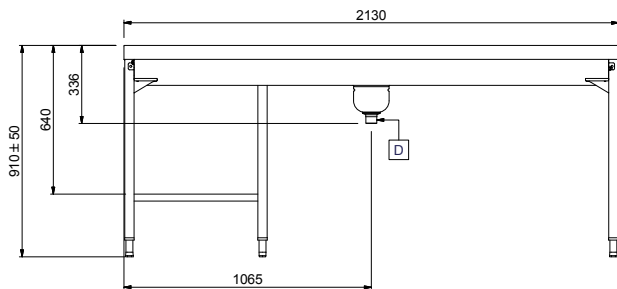
- Tray slide with waste hole and rubber ring, 500 mm PNC 865445 ☐
- Dish scraper PNC 865447 ☐
- Water heating kit for wash basin PNC 865449 ☐
- Automatic basin wash with timer for 4-basket sorting table PNC 865450 ☐
- Foldable tray slide for 4-basket sorting table, 2130 mm PNC 865455 ☐
- Retractable pre-rinse unit with fixed thermostatic water mixer, hose length, 14mm PNC 865460 ☐
- Brackets to support baskets under the sorting table PNC 865478 ☐



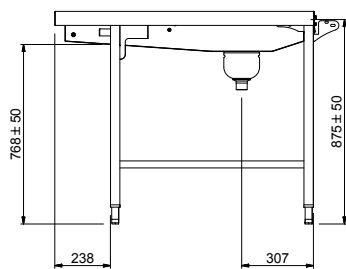
Electrolux
PROFESSIONAL

Handling System for Rack Type Manual Sorting Table, 4 Baskets - Right to Left, 2130mm - Front Connection

Front

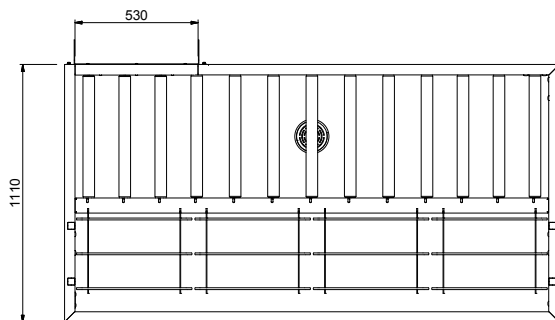


Side



D = Drain

Top



Key Information:

External dimensions, Width:

865295 (HSMSF4RL)

2130 mm

External dimensions, Depth:

1110 mm

External dimensions, Height:

910 mm

Net weight:

52 kg

Height adjustment:

50/50 mm

Basket movement:

Right to left

Basin material:

Stainless Steel AISI 304 -
EN 1.4301

Type of rollers:

Long



Handling System for Rack Type
Manual Sorting Table, 4 Baskets - Right to Left, 2130mm - Front
Connection
The company reserves the right to make modifications to the products
without prior notice. All information correct at time of printing.

2025.04.25